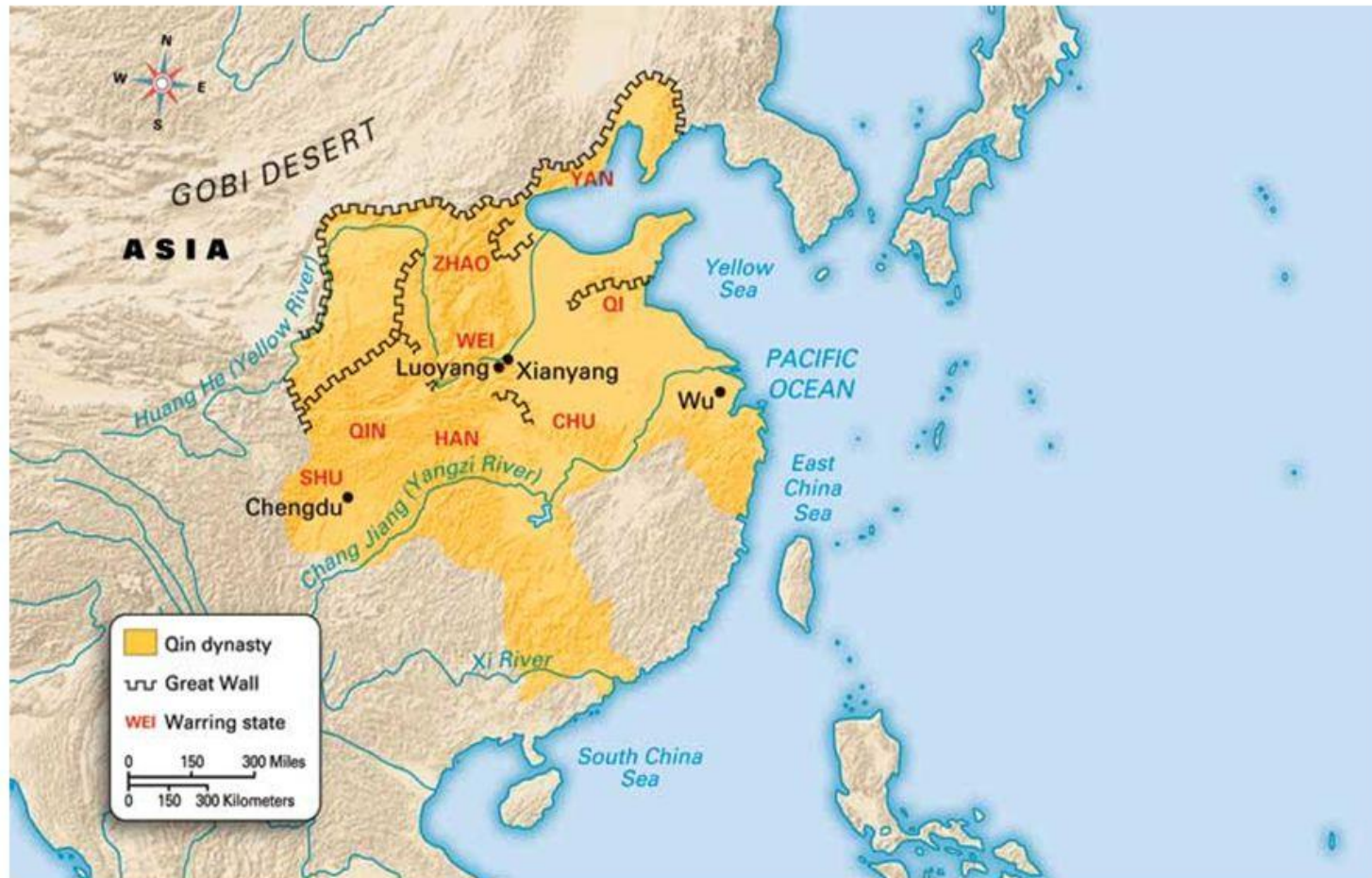
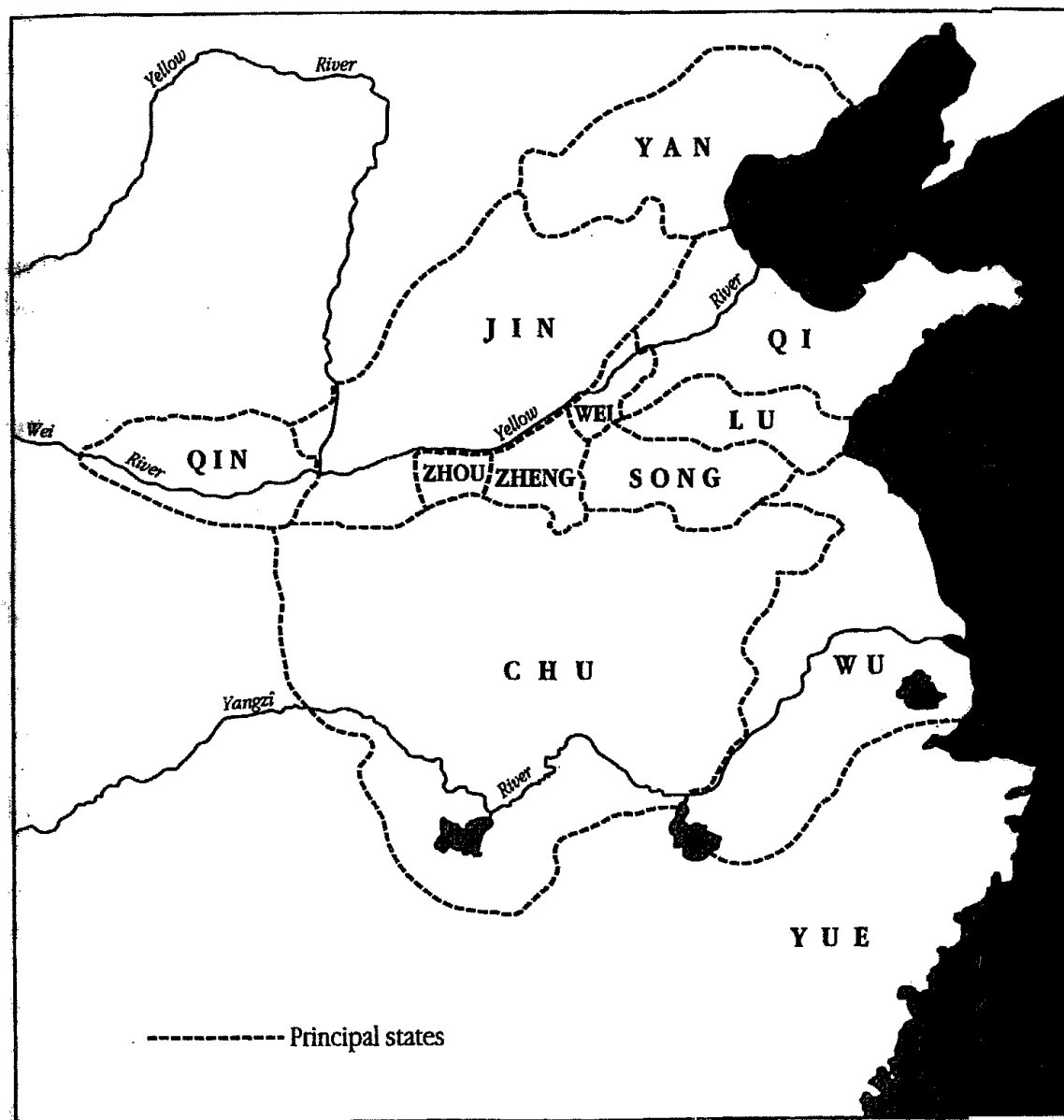


*The Qin:
The First Chinese Empire
& the First Emperor*

{ Duncan Campbell
{ University of the Third Age, May 2019

The Qin Dynasty 221-206 BC









秦始皇



司馬遷

劉向楊雄博極群書皆稱太史公有良史之才





The end portion of an inventory list of weapons written in A.D. 93-95 on 77 tablets strung together by two lines of hemp threads. Each tablet is 23×1.3 cm., and the whole list spreads out 122 cm. long.

矣今魯城壞卽壓齊境

索隱齊魯鄰近齊數侵魯魯之城壞卽壓近齊之境也

君其

圖之桓公乃許盡歸魯之侵地既已言曹沫投其匕首下

壇北面就羣臣之位顏色不變辭令如故桓公怒欲倍其

約

索隱倍音佩也

管仲曰不可夫貪小利以自快棄信於諸侯失

天下之援不如與之於是桓公乃遂割魯侵地曹沫三戰

所亡地盡復予魯其後百六十有七年而吳有專諸之事

索隱專字亦作刺音同左傳作鱗設諸

專諸者吳堂邑人也

索隱地理志臨淮有堂邑縣

五子胥之亡楚而如吳也知專諸之能五子胥既見吳王

僚說以伐楚之利吳公子光曰彼五員父兄皆死於楚而

員言伐楚欲自爲報私讎也非能爲吳吳王乃止伍子胥

知公子光之欲殺吳王僚乃曰彼光將有內志未可說以

外事

索隱言其將有內難弑君之志且對外事生文吳世家曰知光有他志

乃進專諸於公

子光光之父曰吳王諸樊諸樊弟三人次曰餘祭

索隱祭音側界

反

次曰夷昧

索隱亡葛反公羊作餘末

次曰季子札諸樊知季子札賢

而不立太子以次傳三弟欲卒致國于季子札諸樊既死

傳餘祭餘祭死傳夷昧夷昧死當傳季子札季子札逃不

肯立吳人乃立夷昧之子僚爲王公子光曰使以兄弟次

邪季子當立必以子乎則光眞適嗣當立故嘗陰養謀臣

以求立光既得專諸善客待之九年而楚平王死

索隱春秋昭二

十六年楚子居卒是也吳世家云十二年此云

九年並誤據表及左傳合在僚之十一年也

春吳王僚欲因楚喪使其二弟公子蓋餘屬庸

索隱屬音燭二子僚之弟也左傳作掩餘

屬庸掩蓋義同

將兵圍楚之濫

索隱事在魯昭二十七年地理志廬江有濫縣天柱



Li Ssu (d. 208 B.C.). *Lang-yeh-t'ai*.
Dated 219 B.C. Detail of rubbing.



森公不自不聽
 病皇自致天
 命寒又二國
 十又二公不
 天上一命嚴
 天命仍難
 久森繞吏
 良白余雖少
 雖肺兼明楚
 百戰于森
 戰不且變
 士蘇大走銀
 咸富百辟
 燭萬生是
 民噴明刀
 王福戰
 敬城祀乙
 獻萬明其
 又召曰智
 其言鏗譚
 峯乙却壽
 官乙多中
 王聲闢蒼
 疆暖堂十
 高之之
 斗牙龍
 又牙龍
 又牙龍

FIGURE 6: Sung hand-copy of the First Ch'in-po inscription
 (after Shang-hai po-wu-kuan 1987, 2:919)

Three-legged cauldron (Ding)
 三足带盖小鼎 / 三足带盖小鼎

Spring and Autumn period (771-476 BCE)
 Bronze, 6.5 x 6cm
 Collected in 2001
 Fengxiang County Museum, 总1003

This small, refined vessel decorated with incised motifs of fish, birds and tigers differs from typical bronzes of the period. It was possibly made by a neighbouring state and acquired by the Qin as booty.



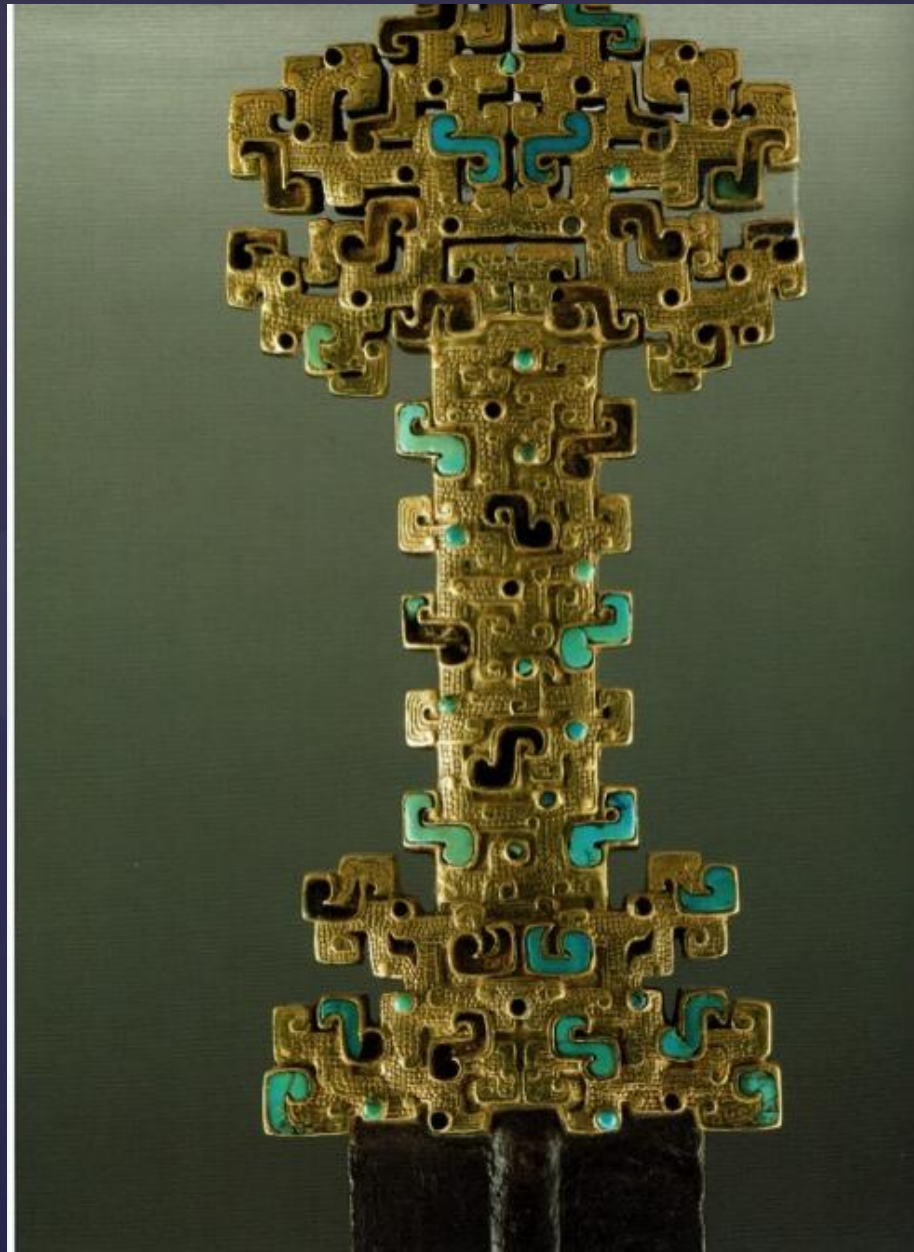
Three-legged cauldron (Ding)
 带盖铜鼎 / 带盖铜鼎

Warring States period (475-221 BCE)
 Bronze, 27 x 27.8cm
 Excavated at Juanling, Shanyang,
 Shangluo, 1998
 Shangluo City Museum, 总0710 D198

Three-legged cauldron (Ding) with inscriptions
 成山铜鼎 / 成山铜鼎

Han dynasty (206 BCE-220 CE)
 Bronze, 17 x 19.5cm
 Collected in 1975
 Fengxiang County Museum, 总0080







83. Tile-end with cloud design
卷云纹瓦当 / 捧霞纹瓦当

Qin dynasty (221-206 BCE)
Pottery, diameter 16.5cm
Excavated at the First Emperor of Qin's
Mausoleum, 1976
Emperor Qin Shihuang's Mausoleum Site
Museum, 002560



84. Tile-end with cloud design
卷云纹瓦当 / 捧霞纹瓦当

Qin dynasty (221-206 BCE)
Pottery, diameter 15.7cm
Excavated at the First Emperor of Qin's
Mausoleum, 1982
Emperor Qin Shihuang's Mausoleum Site
Museum, 003452



85. Tile-end with cloud design
云纹瓦当 / 捧霞纹瓦当

Han dynasty (206 BCE-220 CE)
Pottery, diameter 13cm
Excavated from the Dongling Mausoleum,
Lintong, Xi'an, 1986
Shaanxi Provincial Institute of Archaeology,
004473

